

# CROSS BEARERS

- Dress should be neat, modest and appropriate, signifying the honor of the ministry you perform and expressing the dignity of our celebration. Please take off your coat.
- Bring the cross from its place in the sanctuary about 5 minutes before the 4 p.m. Mass and return it to its place after Mass on Sunday.
- Stand off to the side with the cross before Mass begins so that you do not block the baptismal font or the aisle as you await the beginning of Mass..
- At the signal from the priest, walk **slowly and deliberately**, leading the procession.
- As you approach the front of the church, **DO NOT BOW**, proceed slowly up the steps to the stand and mount the cross on it. Hold the cross straight and it should go on the stand easily. Do not force it into the stand. Check to be sure the cross is facing forward; then, join Father to bow, and return to your place in the assembly.
- When the assembly stands after communion be prepared to come forward. When the final blessing is finished, more immediately to take the cross from its stand and wait at about the second pew in the center aisle **facing the altar**. When the priest BOWS, turn around and lead the recessional. Place cross in its stand at rear of church.

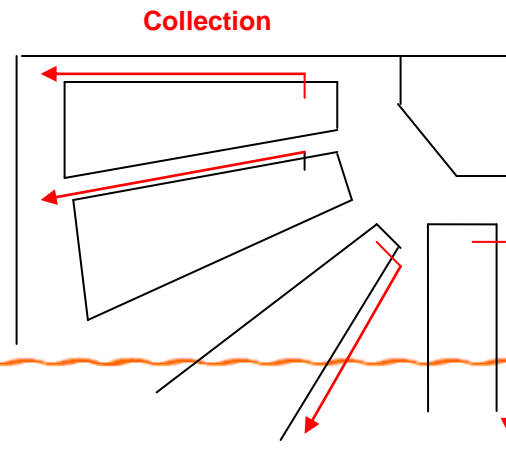
*Please remember you are responsible to get a substitute when you cannot be at the Mass for which you are scheduled.*

## IN CASE OF EMERGENCY OR ACCIDENT

A **"SPILL KIT"** is located in the closet between the washrooms in the entry area. All that is needed to clean up a mess is provided there.

A **FIRST AID KIT** is located in the kitchen in a marked drawer in the cupboard below the dishwasher and in the sacristy.

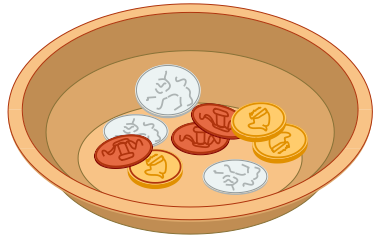
The **AED** is mounted on the wall



## Instructions

---

**For**



**Ushers / Greeters**  
**Ministers of Hospitality**

St. Maria Goretti Church  
December 2014

---